



IMAGINE

Inflammation, Microbiome & Alimentation Gastro-Intestinal & Neuropsychiatric Effects

Network Newsletter
September 2017
Issue 2

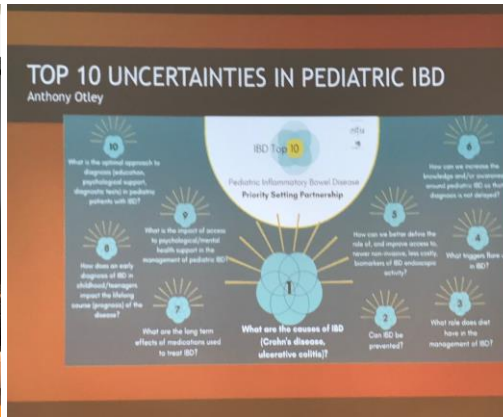
MEETING OF THE MINDS IMAGINE's 2017 Network Meeting

On June 3-4, 2017, the IMAGINE Network held its annual face-to-face meeting in Toronto.

The weekend started with a patient-orientated foundational curriculum workshop for clinicians, researchers and patients. The training session was led by patient research partners, Sandra Zelinsky and Amy van Engelen. Discussion revolved around types of patient engagement and the group brainstormed ideas for patient-focused research questions for IMAGINE sub-studies.

On Sunday, the network meeting covered progress on the main cohort study, updates from the Research and Publications Subcommittee, and work plans from the Sex & Gender and Knowledge Translation Working Groups.

Thank you to all those who participated. We look forward to the next face-to-face meeting! Keep up to date with IMAGINE by following us on Twitter, Facebook, and our website, www.imaginespor.com.



UPCOMING EVENTS

October 13-18, 2017
World Congress of
Gastroenterology
Orlando, Florida, USA

FOLLOW US!

 [@IMAGINE_SPOR](https://twitter.com/IMAGINE_SPOR)

 [@IMAGINESPOR](https://www.facebook.com/IMAGINESPOR)

www.imaginespor.com

CONTACT

IMAGINE Network
1200 Main St. W.
HSC 3V33
Hamilton, ON.
L8N 3Z5
vandenev@mcmaster.ca
905-521-2100
ext.76334



IMAGINE
Inflammation, Microbiome & Alimentation
Gastro-Intestinal & Neuropsychiatric Effects

Strategy for Patient-Oriented Research / Stratégie de recherche axée sur le patient
SPOR*SRAP
Putting Patients First / Le patient d'abord



Network Updates

IMAGINE has been making progress in many areas. Here are some of our latest milestones:

- ✓ A Master Partner Agreement is fully executed between McMaster University and its partnering institutions to confirm financial contributions from University of Calgary, University of Alberta, University of Manitoba, Queen's University, Dalhousie University and Université de Montreal.
- ✓ Research documents have been developed and finalized including research protocols and Standard Operating Procedures for specimen collection, questionnaires, data collection instruments, and consent forms for the main longitudinal cohort study.
- ✓ Ethics approvals have been received at McMaster and Queen's and applications are in progress at the University of Alberta, University of Manitoba, and Dalhousie University for the main longitudinal cohort study.
- ✓ Several research sub-studies are ahead of schedule and have been launched including the Fecal Transplantation in ulcerative colitis (McMaster University) and the Fecal Transplantation in Crohn's disease (University of Alberta).
- ✓ Recruitment for the main cohort study is expected to begin by end of September in Hamilton, Kingston and Winnipeg.

OUT & ABOUT

Check out what some of IMAGINE's researchers have been up to

Earlier this summer, **Dr. Anthony Otley**, IMAGINE's Pediatric Working Group Lead, presented at the IWK Health Centre Pediatric Grand Rounds on the impact of engaging patients and family in research in pediatric inflammatory bowel disease.



Sandra Zelinsky, one of IMAGINE's patient research partners and Co-Lead of the Patient Engagement Working Group, was showcased on the Patient Voices podcast as well as The Methods Hub podcast. Sandra discussed the importance of treating patients as equals and bringing the patient voice to medical research. You can listen to the Patient Voices podcast [here](#) and The Methods Hub podcast [here](#).

IMAGINE's Principal Investigator, **Dr. Paul Moayyedi**, has been making his rounds at the podium, including presenting on the comparative efficacy of traditional treatments and treatments targeting the microbiome in IBD and IBS at the Falk Symposium 2017 in Brisbane, Australia. Most recently Dr. Moayyedi presented on FMT in IBD for the Malaysian Society of Gastroenterology in Penang, Malaysia.



Do you have a story suggestion, research update or a piece of news that you would like to share with the IMAGINE Network in a future edition? Email Veronica Vandenevde at vandenev@mcmaster.ca with your ideas.